

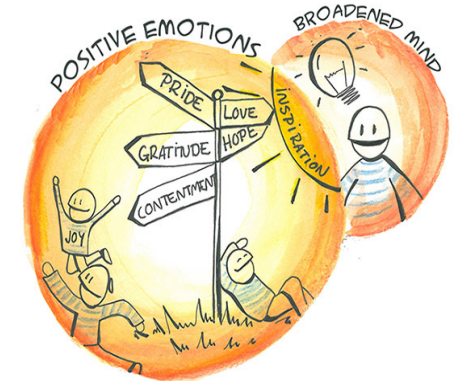
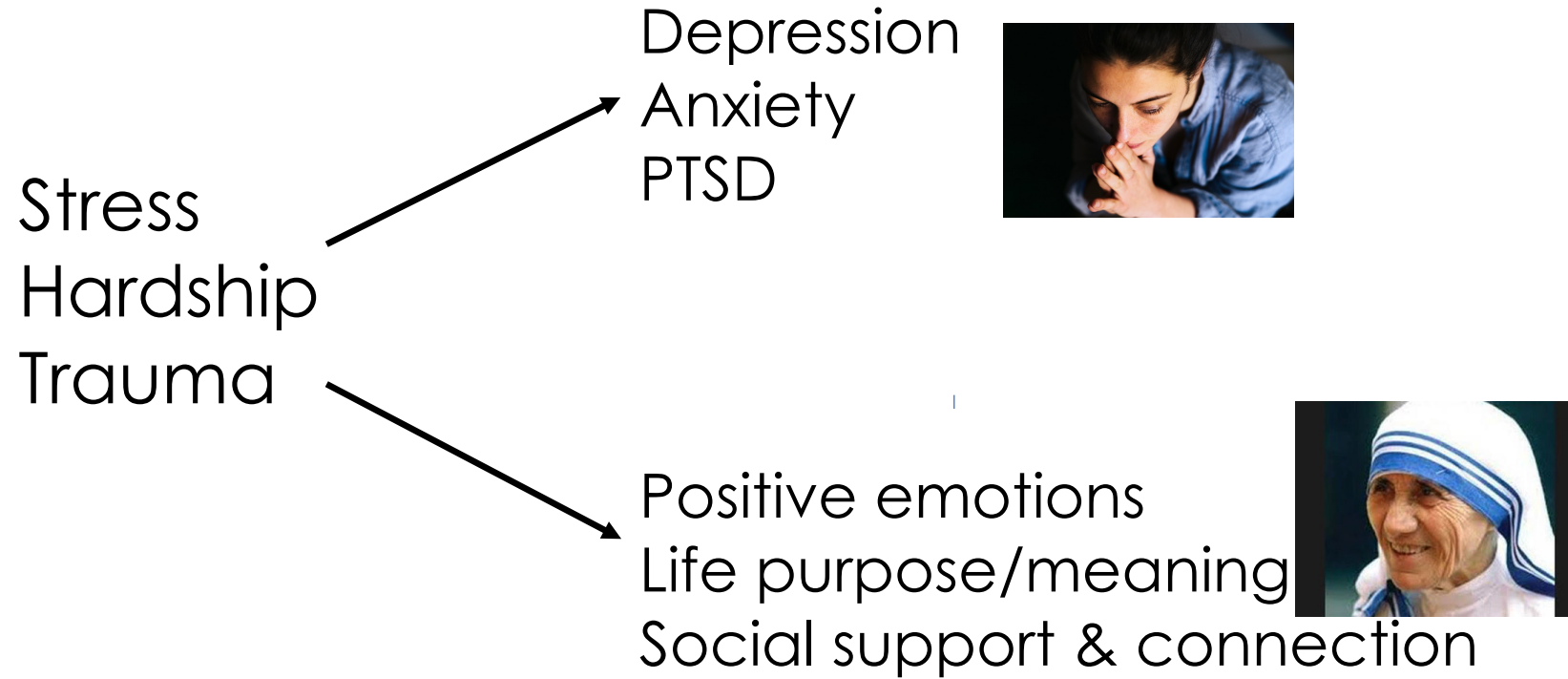
Mood, resilience, and brain health

Aliza Wingo, MD
Associate Professor of Psychiatry



EMORY
UNIVERSITY

Ramifications of stress



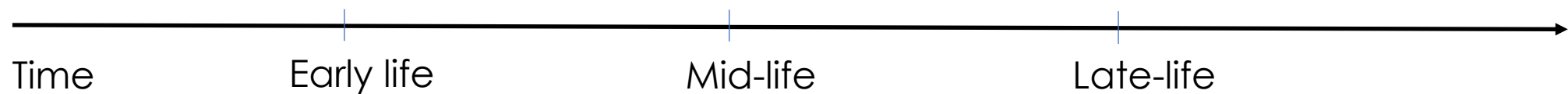
Psychiatric conditions have ramifications on cognitive health



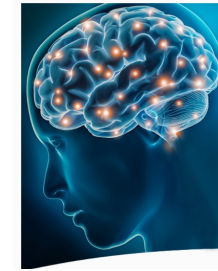
Major depression
Anxiety disorders
PTSD
Alcohol addiction



Dementia



Psychological resilience enhances cognitive health



Positive emotions
Life purpose, meaning
Social support & connection



Dementia




Effect of a Purpose in Life on Risk of Incident Alzheimer Disease and Mild Cognitive Impairment in Community-Dwelling Older Persons

Patricia A. Boyle, PhD; Aron S. Buchman, MD; Lisa L. Barnes, PhD; David A. Bennett, MD

Journal of the International Neuropsychological Society (2021), 1–6
Copyright © INS. Published by Cambridge University Press, 2021.
doi:[10.1017/S1355617721001211](https://doi.org/10.1017/S1355617721001211)

Relationship of Purpose in Life to Dementia in Older Black and White Brazilians

Robert S. Wilson^{1,2,3,*} , Ana W. Capuano^{1,2,4}, Carolina Sampaio⁴, Sue E. Leurgans^{1,2}, Lisa L. Barnes^{1,2,3}, Patricia A. Boyle^{1,3}, Jose M. Farfel^{1,4} and David A. Bennett^{1,2,4}

¹Rush Alzheimer's Disease Center, Rush University Medical Center, Chicago, IL, USA

²Department of Neurological Sciences, Rush University Medical Center, Chicago, IL, USA

³Department of Psychiatry and Behavioral Sciences, Rush University Medical Center, Chicago, IL, USA

⁴Instituto de Assistencia Medica ao Servidor Publico do Estado (IAMSPE), Sao Paulo, Brazil

Resilience and cognition *Emory Healthy Aging Study*



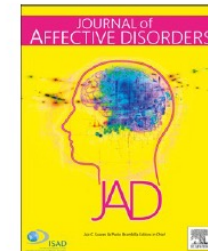
Journal of Affective Disorders 263 (2020) 310–317



Contents lists available at [ScienceDirect](#)

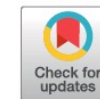
Journal of Affective Disorders

journal homepage: www.elsevier.com/locate/jad



Research paper

Purpose in life is a robust protective factor of reported cognitive decline among late middle-aged adults: The Emory Healthy Aging Study



Aliza P. Wingo^{a,b,1,*}, Thomas S. Wingo^{c,1}, Wen Fan^c, Sharon Bergquist^d, Alvaro Alonso^e, Michele Marcus^e, Allan I. Levey^{c,2}, James J. Lah^{c,2}

Mental health has repercussions on cognitive health



Major depression
Anxiety disorders
PTSD



Dementia

Positive emotions
Life purpose / meaning
Social support & connection

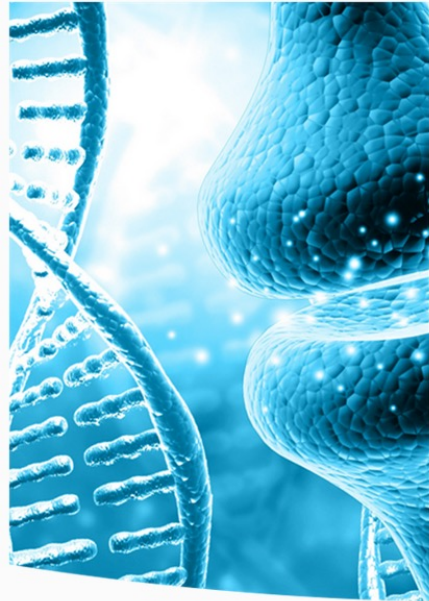




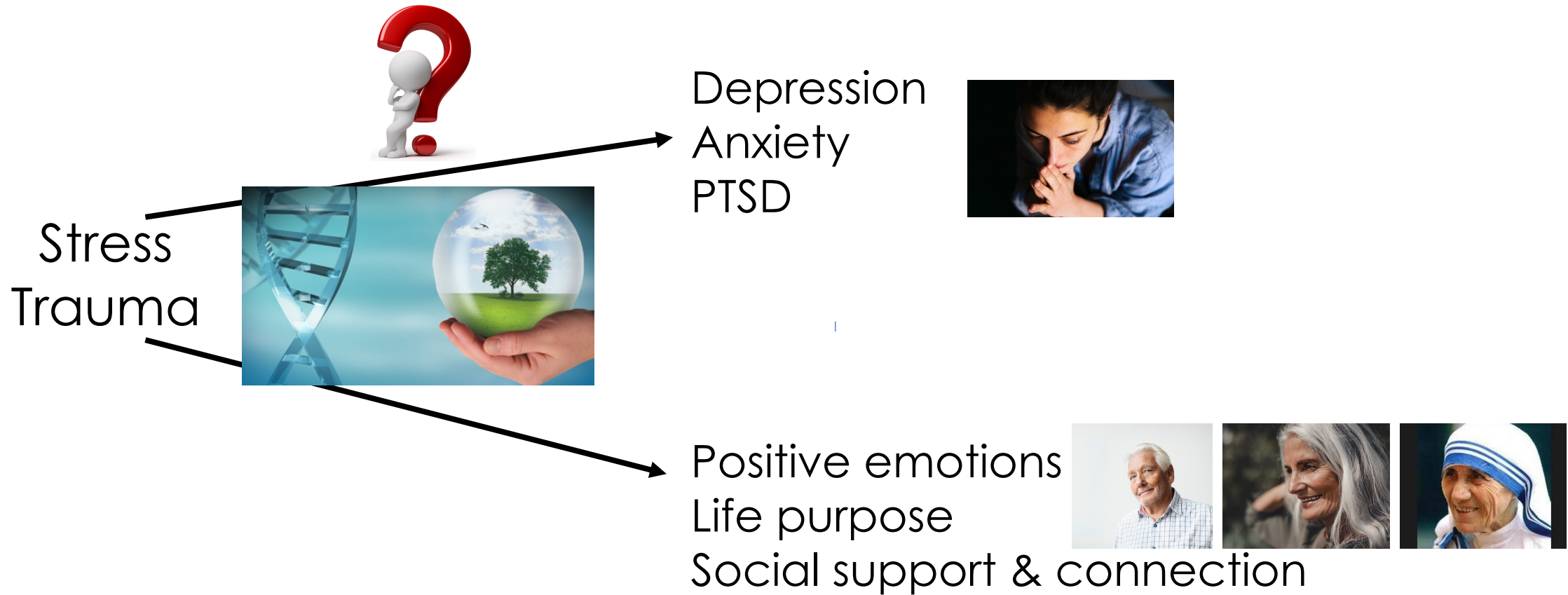
WINGO
Laboratory

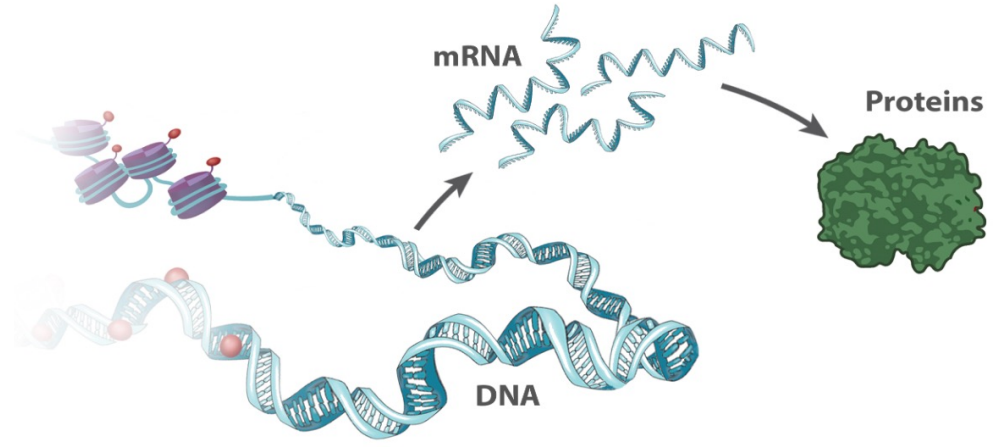
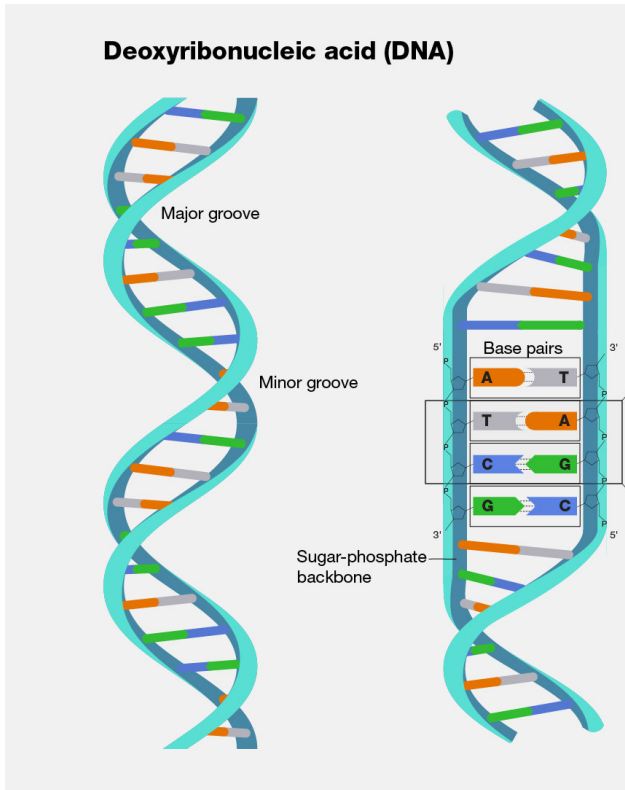
[Home](#) [People](#) [Projects](#) [Open Positions](#) [Contact](#)

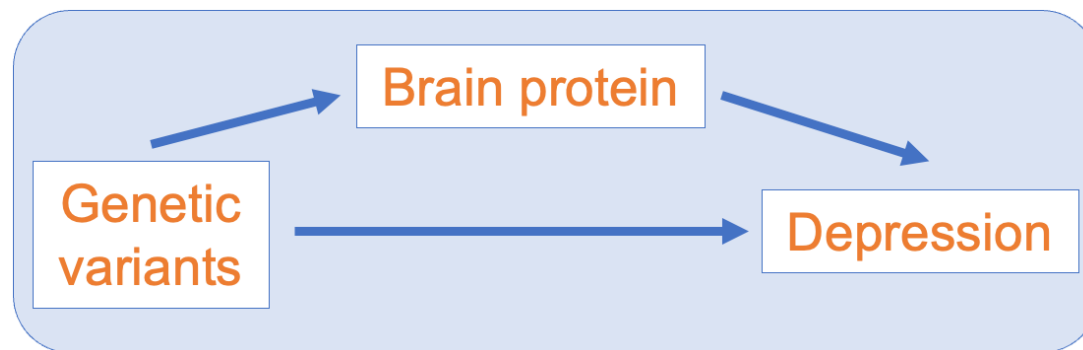
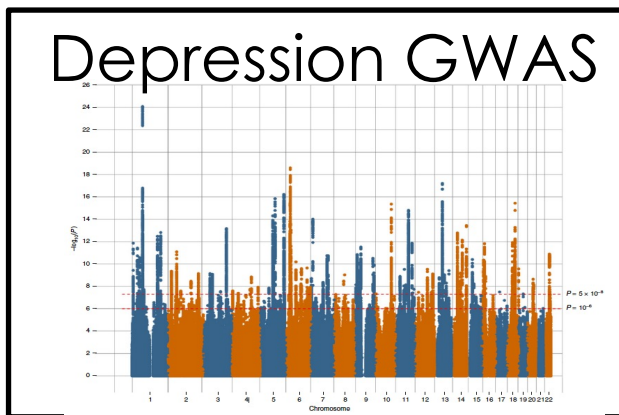
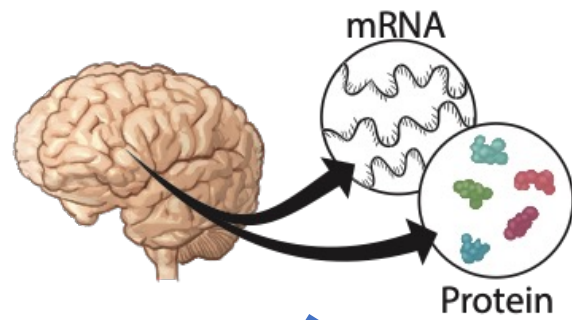
Focusing on understanding the genetic & molecular basis of
brain illnesses



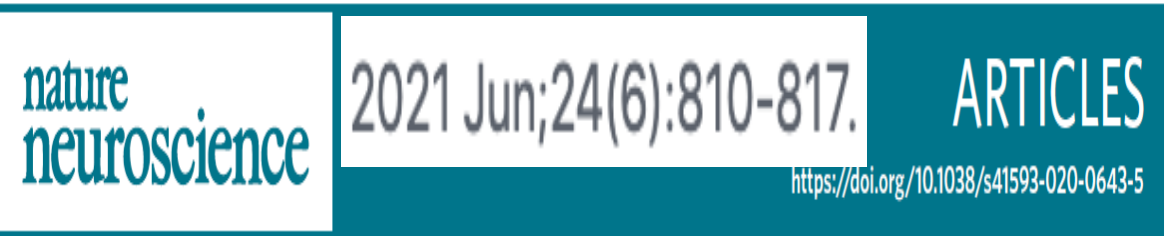
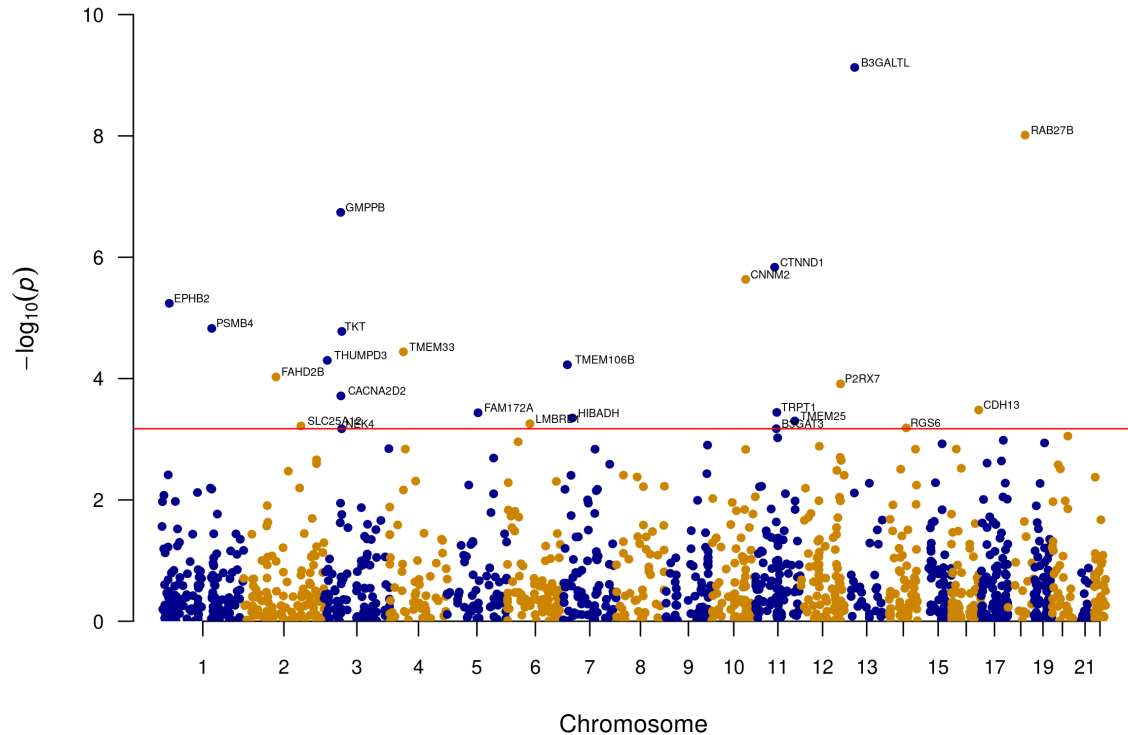
Susceptibility / resilience to stress





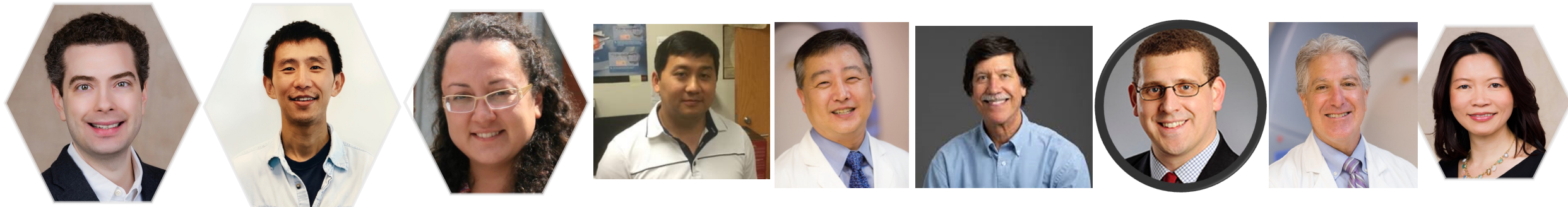


We identified 98 proteins contributing to depression pathogenesis



Brain proteome-wide association study implicates novel proteins in depression pathogenesis

Thomas S. Wingo^{1,2}, Yue Liu¹, Ekaterina S. Gerasimov¹, Jake Gockley³, Benjamin A. Logsdon³, Duc M. Duong⁴, Eric B. Dammer⁴, Adriana Lori⁵, Paul J. Kim⁵, Kerry J. Ressler⁶, Thomas G. Beach⁷, Eric M. Reiman⁸, Michael P. Epstein², Philip L. De Jager⁹, James J. Lah¹, David A. Bennett¹⁰, Nicholas T. Seyfried⁴, Allan I. Levey¹ and Aliza P. Wingo^{5,11}



Identified 22 causal proteins contributing to Alzheimer's disease

nature
genetics

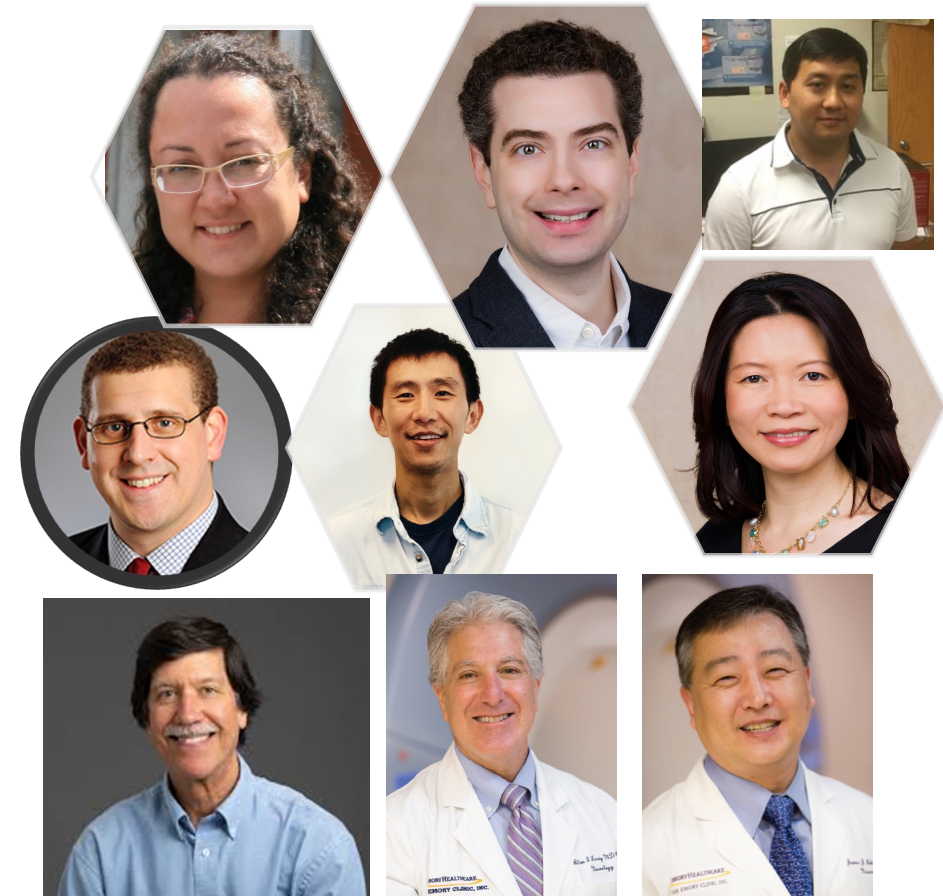
LETTERS

<https://doi.org/10.1038/s41588-020-00773-z>

Check for updates

Integrating human brain proteomes with genome-wide association data implicates new proteins in Alzheimer's disease pathogenesis

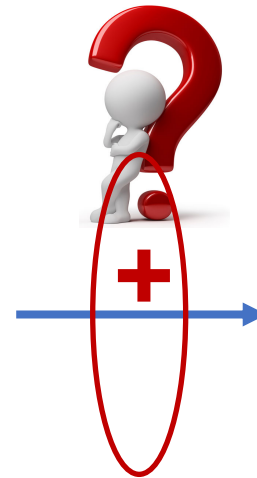
Aliza P. Wingo^{1,2}✉, Yue Liu³, Ekaterina S. Gerasimov³, Jake Gockley⁴, Benjamin A. Logsdon⁴, Duc M. Duong⁵, Eric B. Dammer⁵, Chloe Robins³, Thomas G. Beach⁶, Eric M. Reiman⁷, Michael P. Epstein⁸, Philip L. De Jager⁹, James J. Lah³, David A. Bennett¹⁰, Nicholas T. Seyfried⁵, Allan I. Levey³ and Thomas S. Wingo^{3,8}✉



Psychiatric conditions have ramifications on cognitive health



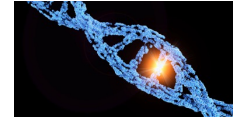
Major depression
Anxiety disorders
PTSD
Alcohol addiction



Dementia



Shared genetic diathesis between depression and Alzheimer's dementia



nature communications



Article

<https://doi.org/10.1038/s41467-022-31873-5>

Shared mechanisms across the major psychiatric and neurodegenerative diseases

Received: 5 October 2021

Accepted: 7 July 2022

Published online: 26 July 2022

Check for updates

Thomas S. Wingo^{1,2,3} , Yue Liu², Ekaterina S. Gerasimov², Selina M. Vattathil², Meghan E. Wynne⁴, Jiaqi Liu², Adriana Lori⁵, Victor Faundez⁴, David A. Bennett⁶, Nicholas T. Seyfried^{1,7}, Allan I. Levey^{1,2} & Aliza P. Wingo^{5,8}

Several common psychiatric and neurodegenerative diseases share epide-

ARTICLE IN PRESS

Archival Report

Biological Psychiatry

Genetic Evidence Supporting a Causal Role of Depression in Alzheimer's Disease

Nadia V. Harerimana, Yue Liu, Ekaterina S. Gerasimov, Duc Duong, Thomas G. Beach, Eric M. Reiman, Julie A. Schneider, Patricia Boyle, Adriana Lori, David A. Bennett, James J. Lah, Allan I. Levey, Nicholas T. Seyfried, Thomas S. Wingo, and Aliza P. Wingo

ABSTRACT

BACKGROUND: Depression has been associated with a higher risk of Alzheimer's disease (AD) in several prospective studies; however, mechanisms underlying this association remain unclear.

Received: 15 February 2022 | Revised: 4 May 2022 | Accepted: 18 May 2022

DOI: 10.1002/alz.12716

FEATURED ARTICLE

Alzheimer's & Dementia[®]
THE JOURNAL OF THE ALZHEIMER'S ASSOCIATION

Alzheimer's disease genetic burden is associated with mid-life depression among persons with normal cognition

Thomas S. Wingo^{1,2,3} | Ekaterina S. Gerasimov² | Se Min Canon² | James J. Lah^{1,2} | Allan I. Levey^{1,2} | Aliza P. Wingo^{4,5}

¹Goizueta Alzheimer's Disease Center, Emory University School of Medicine, Atlanta, Georgia, USA

Abstract

Introduction: Despite an established link between depression and higher Alzheimer's

Treatment of depression can offset the increased risk for dementia!



Major depression
Anxiety disorders
PTSD
Alcohol addiction



Dementia



Treatment of depression



Activities to enhance resilience and brain health



Thank you for
your attention

