

EMORY



Lecanemab: Understanding the New Drug

BrainTalk Live: 31 January 2023

Erik Johnson, MD, PhD
Department of Neurology
Goizueta Alzheimer's Disease Research Center
Center for Neurodegenerative Disease
Emory University School of Medicine

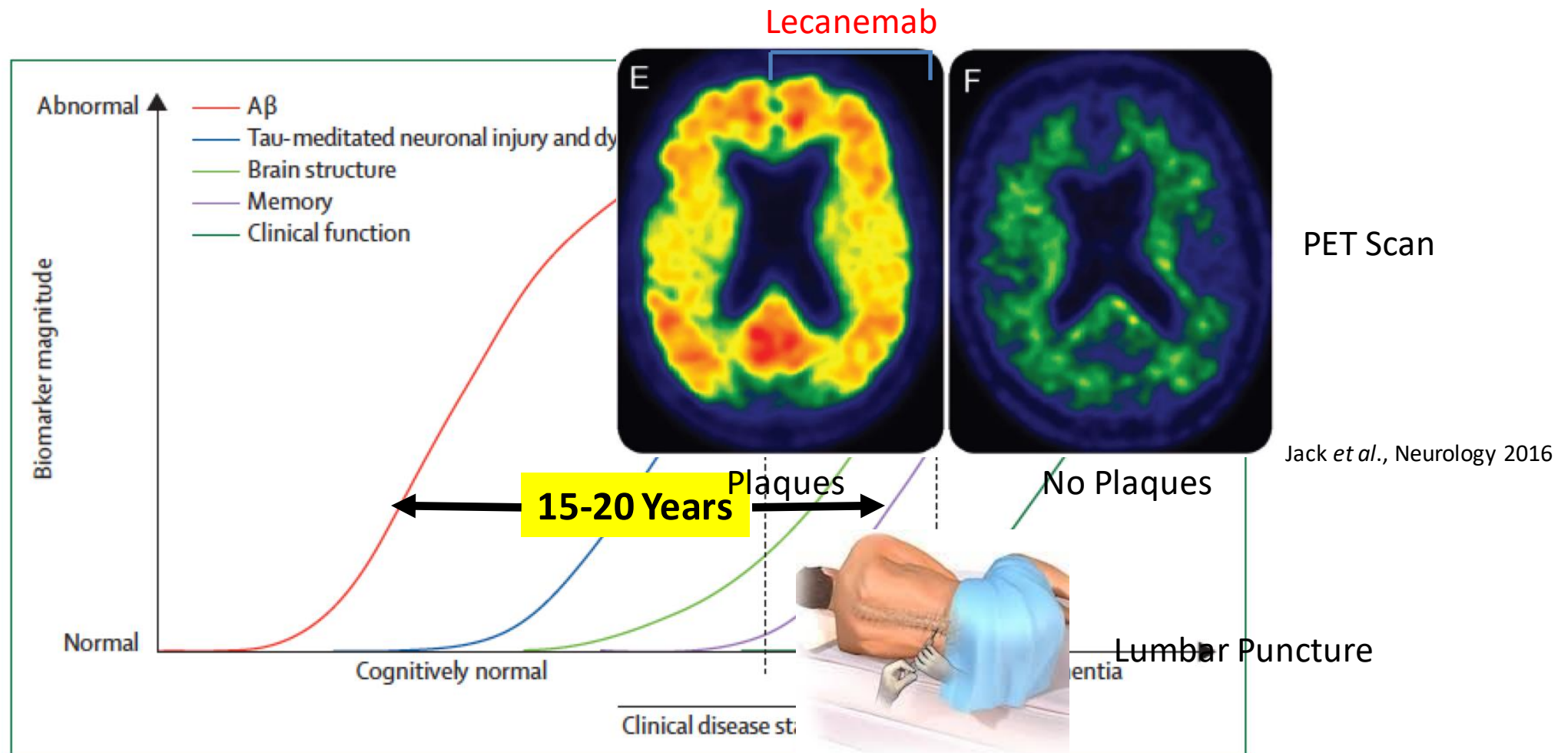


EMORY
UNIVERSITY

**Goizueta Alzheimer's
Disease Research Center**

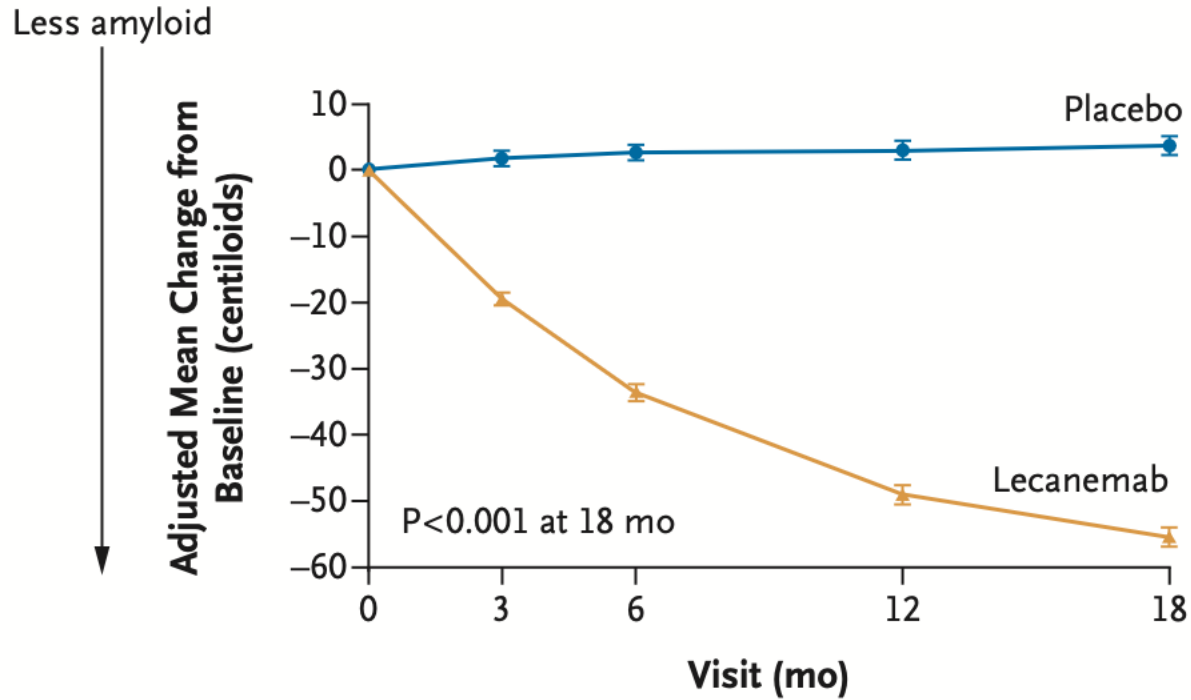
www.alzheimers.emory.edu

The Evolution of Alzheimer's Disease

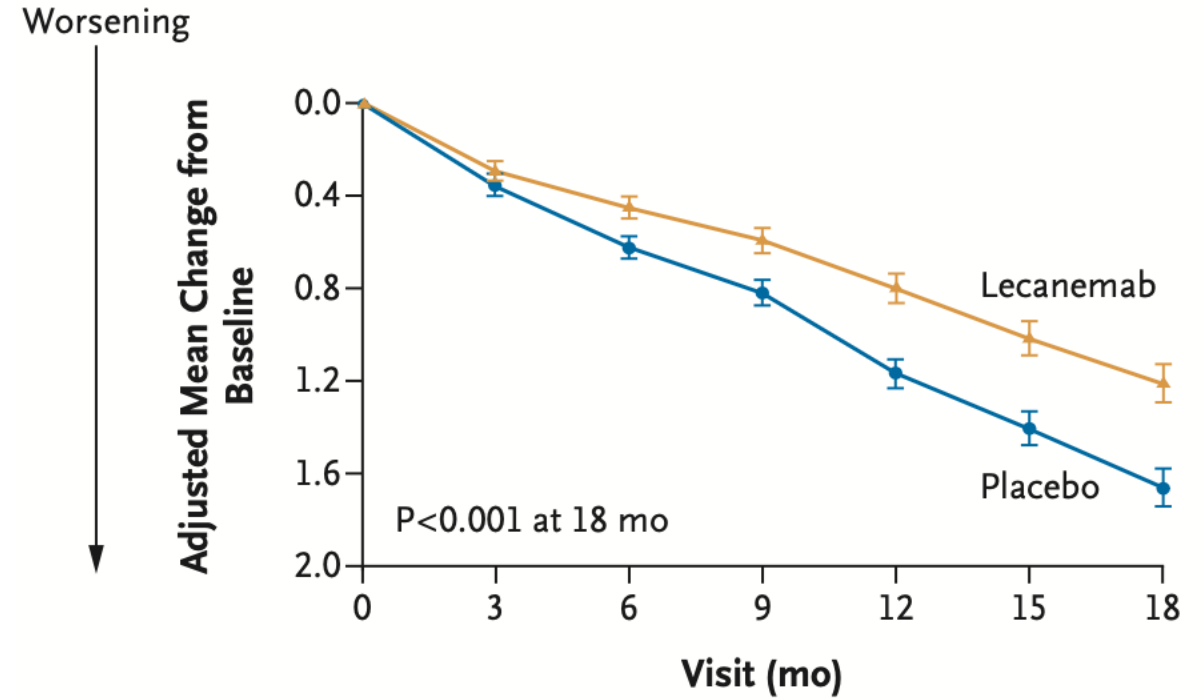


The Effect of Lecanemab

Amyloid Burden



Overall Function



Potential Risks of Lecanemab

- Infusion-related reaction (~26%)
- Excessive brain inflammation (~3%)
- Significant brain bleeding (~0.6%)

Who Is Eligible?

Must Be/Have:

- Age 50-90
- Amyloid in brain
- Mild symptoms
- Recent clinical assessment (w/in 3 mo)
- Recent MRI scan (w/in 1 yr), ability to receive more scans
- Informant/care partner/family available to attend follow-up visits

Cannot Be/Have:

- Evidence of significant strokes or bleeding in the brain
- Seizure within the past 12 months
- Unstable severe psychiatric illness in past 6 months
- A bleeding disorder
- Severe uncontrolled diabetes or hypertension
- Significant heart problems (excluding atrial fibrillation)
- Severe kidney problems
- Alcohol and substance abuse problems in the past year
- Undergoing active cancer treatment
- Recent severe illness (e.g., pneumonia)
- Be immunosuppressed



Special Considerations

- Blood thinners (anticoagulation)
- APOE4 genotype
 - Different risk/benefit calculation?
- Cost and Access
 - Insurance coverage not yet available
- Infusion every 2 weeks
- Duration of Treatment?
 - Maintenance treatment?
- Subjects currently enrolled in clinical trials?